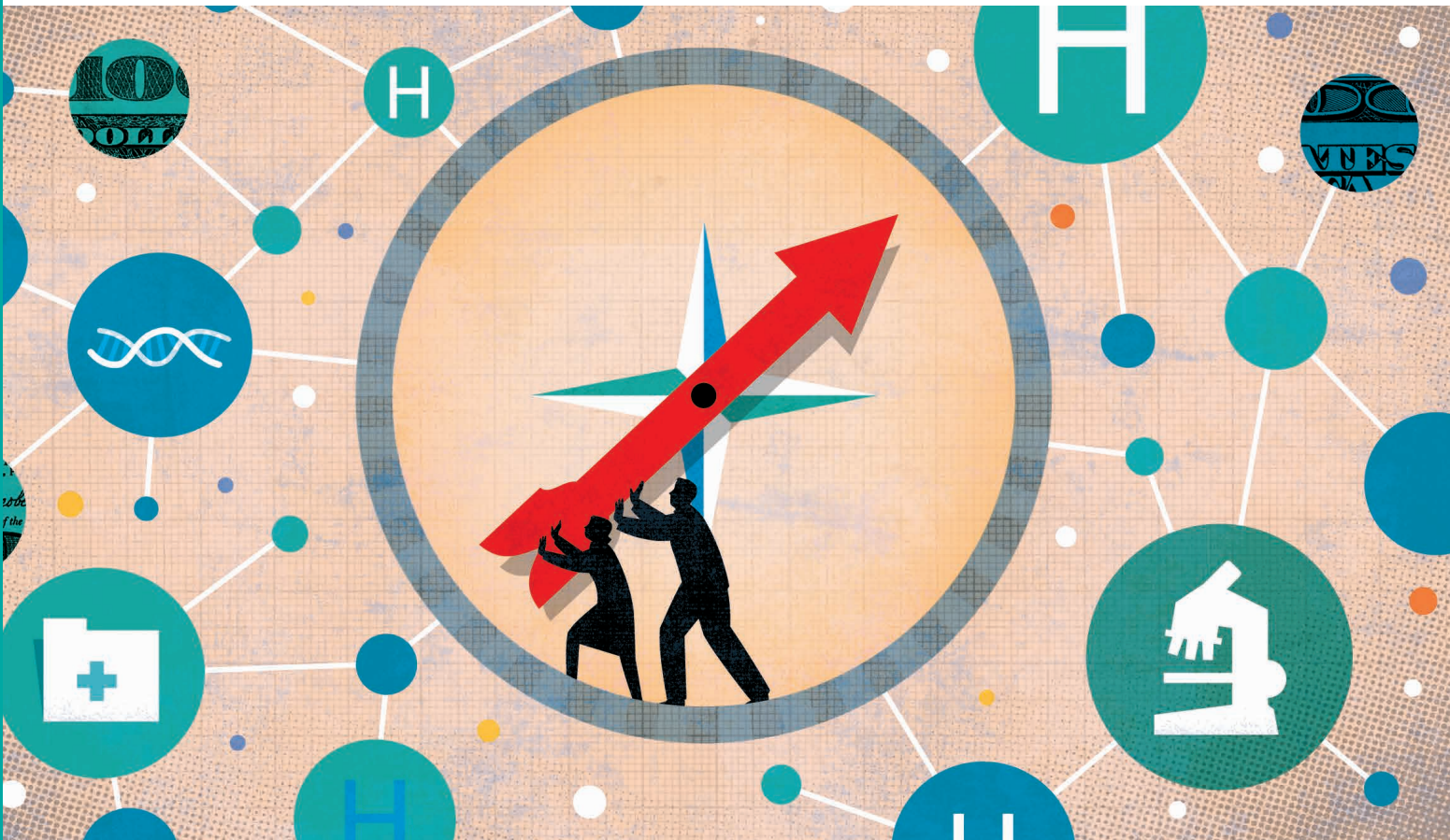




ManhattanLife™

Standing By You. Since 1850.



2020 Medicare Supplement

ManhattanLife Assurance Company of America

This brochure is for solicitation of insurance, and contact will be made by an insurance agent or insurance company.



ManhattanLife Assurance Company of America

Medicare Supplement

PROTECTION FROM THE BILLS MEDICARE DOESN'T PAY

Medicare was never meant to cover all of your doctor and hospital bills. Many people do not realize this and expect it to pay all doctor and hospital bills. Reliance on Medicare in this situation can mean financial difficulty with out-of-pocket expenses.

ManhattanLife Assurance Company of America OFFERS 4* STANDARDIZED INSURANCE PLANS

The ManhattanLife Assurance Company of America ("ManhattanLife Assurance") Plans are designed to give you choices - choices you need to help cover health care costs today! Our Plans allow you to choose a Medicare Supplement Plan to suit your life's situation, budget, and needs.

**All plans may not be available in your state. Please refer to the Outline of Coverage your agent provided.*

INPATIENT HOSPITAL DEDUCTIBLE

Medicare Part A

Hospital deductibles have risen \$1,368 since 1968 - just 52 years!

\$1,408 in 2020 \$40 in 1968

ALL MEDICARE SUPPLEMENT PLANS OFFER THESE BENEFITS:

Part A Coinsurance pays if you are confined in a hospital. Should you require more than 60 continuous days of hospitalization, ManhattanLife Assurance will pay the coinsurance amounts up to the 150th** day of confinement and also for the first 3 pints of blood each year. Additionally, if you use your lifetime reserve days, ManhattanLife Assurance will provide coverage for up to an additional 365 days.

Part B Coinsurance pays the Medicare Part B coinsurance amount, reducing your out-of-pocket expenses when you require medical services. Plan N requires a co-payment of up to \$20 for an office visit, and up to \$50 co-payment for an emergency room visit.

***Assumes Emergency Reserve days and/or additional 365 days remain.*

Your ManhattanLife Assurance Benefits

Medicare Part A Hospital Coverage

Deductible - ManhattanLife Assurance Plans F, G, and N all pay the \$1,408 inpatient hospital deductible for each benefit period.

First 60 Days - After your Part A deductible is met, Medicare pays all eligible expenses for services from your 1st through 60th day of hospital confinement. Services include semi-private room and board, general nursing, and miscellaneous hospital services and supplies.

Coinsurance - All ManhattanLife Assurance Plans pay up to \$352 a day when you're hospitalized from the 61st through the 90th day. When you're in the hospital from the 91st through 150th day, ManhattanLife Assurance Plans pay you up to \$704 a day for each lifetime reserve day used.

Extended Hospital Coverage - When you're in the hospital longer than 150 days during a Benefit Period, and you've exhausted your 60 Medicare lifetime reserve days, all ManhattanLife Assurance Plans pay the Part A Medicare eligible expenses for hospitalization at the Prospective Payment System (PPS) rate or other appropriate standard of payment, subject to a lifetime maximum benefit of an additional 365 days.

Benefit for Blood - Medicare has one calendar year deductible for blood that is the cost of the first three pints needed. All ManhattanLife Assurance Plans pay this deductible.

Skilled Nursing Facility Care

First 20 Days - Medicare pays all eligible expenses.

Coinsurance - ManhattanLife Assurance Plans F, G, and N pay up to \$176 a day from the 21st through the 100th day during which you receive skilled nursing care. You must enter a Medicare-certified skilled nursing facility within 30 days of being hospitalized for at least three days.

Hospice Care - After you meet Medicare's requirements, including a doctor's certification of terminal illness, Medicare pays all but very limited co-payment or coinsurance for outpatient drugs and inpatient respite care. ManhattanLife Assurance Plans pay the Medicare co-payment or coinsurance.

Medicare Part B Physician's Services and Supplies

Deductible - ManhattanLife Assurance Plan F pays the \$198 calendar year deductible.

Coinsurance - After the Part B deductible, all ManhattanLife Assurance Plans generally pay 20% of Medicare eligible expenses for physician's services, hospital outpatient services and supplies, physical and speech therapy, and ambulance service. Plan N requires the insured to pay a portion of Part B coinsurance or co-payments, up to \$20 co-payment for each covered office visit, including specialists, and up to \$50 co-payment for each covered Emergency Room (ER) visit. The ER co-payment will be waived if admitted to any hospital and the ER visit is covered as a Part A expense.

Excess Benefits - Your bill for Part B services and supplies may exceed the Medicare eligible expense. When that occurs, ManhattanLife Assurance Plan F and G pay 100% of the difference, up to the charge limitation established by Medicare.

Benefit for Blood - Medicare has one calendar year deductible for blood that is the cost of the first three pints needed. All ManhattanLife Assurance Plans pay this deductible.

Additional Benefits

Emergency Care Received Outside of the U.S. - After you pay a \$250 calendar year deductible, ManhattanLife Assurance Plans F, G, and N pay you 80% of eligible billed expenses incurred for emergency care that began during the first 60 consecutive days of each trip outside of the U.S., that would have otherwise have been covered by Medicare if provided in the U.S., up to a lifetime maximum of \$50,000. Benefits are payable for emergency care you need immediately because of a covered injury or illness of sudden and unexpected onset.

Your Plan – The Facts

ManhattanLife Assurance helps pay some eligible expenses not paid for by Medicare Part A and Medicare Part B. *There may be charges above what Medicare and ManhattanLife Assurance pay.*

Medicare Part A eligible expenses for hospital/skilled nursing facility care include expenses for semi-private room and board, general nursing, miscellaneous services and supplies.

Medicare Part B eligible expenses for medical services include expenses for physician's services, hospital outpatient services and supplies, physical and speech therapy, and ambulance service.

Medicare eligible expenses means expenses of the kind covered by Medicare, to the extent recognized as reasonable and medically necessary by Medicare.

A benefit period begins the first full day you are hospitalized and ends when you have not been in a hospital or skilled nursing facility for 60 days in a row.

Coinsurance is the portion of the Medicare eligible expense you have to pay. It does not include Part A and B deductible amounts not paid by Medicare.

As Medicare deductibles and coinsurance increase, your ManhattanLife Assurance benefits will automatically increase. ManhattanLife Assurance benefits will not duplicate benefits paid by Medicare.

Benefits are paid to you or to your hospital or doctor.

You have 31 days from your renewal date to pay your premium. Your policy will stay in force during this 31 day grace period.

Your policy is guaranteed renewable. Your policy cannot be canceled by us. It will be renewed as long as the premiums are paid on time.

Premium rate adjustments may be made based on current health care cost experience for benefits paid. ManhattanLife Assurance reserves the right to establish new premium rates for all insureds based on a class basis, but only after giving you advance notice. *However, we will not increase premiums based on your own claims. Rates may be based on your age* and premiums may increase.

You're covered immediately. There is no waiting period for pre-existing conditions. Benefits will be paid from the time your policy is in force.

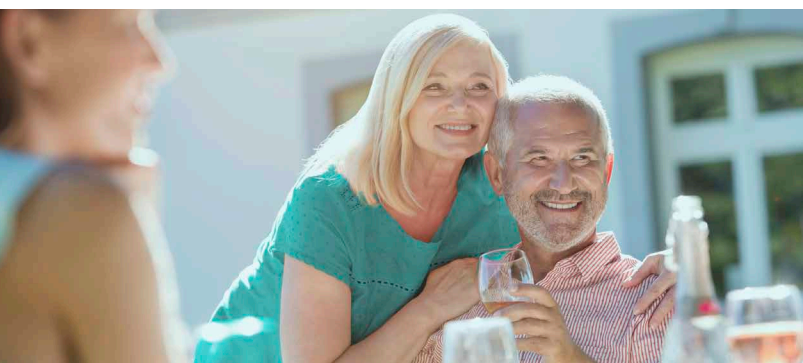
ManhattanLife Assurance Medicare Supplement Plans will not pay for:

- Expenses incurred while the policy is not in force except as provided in the Extension of Benefits section;
- Hospital or skilled nursing facility confinement incurred during a Medicare Part A benefit period that begins while the policy is not in force;
- That portion of any expense incurred which is paid for by Medicare;
- Services for non-Medicare eligible expenses, including but not limited to, routine exams, take-home drugs and eye refractions;
- Services for which a charge is not normally made in the absence of insurance; or
- Loss or expense that is payable under any other Medicare Supplement insurance policy or certificate.

THIS IS A BRIEF DESCRIPTION of your coverage. For complete information on benefits, exceptions and limitations, ***PLEASE READ YOUR ACCOMPANYING OUTLINE OF COVERAGE.***

Neither ManhattanLife Assurance nor its agents are connected in any way with the federal or state government or Medicare.

**States that will not increase based on age: AZ, GA, ID, MO*



Medicare Plans*

	Medicare Pays	Plan A Pays	Plan F** Pays	Plan G Pays	Plan N Pays
Medicare Part A Hospital Coverage					
Deductible	All but \$1,408	–	\$1,408	\$1,408	\$1,408
First 60 days	100%	–	–	–	–
Coinsurance 61-90 days	All but \$352	Up to \$352	Up to \$352	Up to \$352	Up to \$352
Coinsurance 91-150 days	All but \$704	Up to \$704	Up to \$704	Up to \$704	Up to \$704
Extended Hospital Coverage (up to an additional 365 days in your lifetime)	–	Eligible Expenses	Eligible Expenses	Eligible Expenses	Eligible Expenses
Benefit for Blood First Three Pints	\$0	Three Pints	Three Pints	Three Pints	Three Pints
Additional Amounts	100%	–	–	–	–
Hospice Care	All but very limited co-payment/coinsurance for outpatient drugs & inpatient respite care	Medicare co-payment/coinsurance	Medicare co-payment/coinsurance	Medicare co-payment/coinsurance	Medicare co-payment/coinsurance
Skilled Nursing Facility Care					
First 20 Days	100%	–	–	–	–
Coinsurance 21 - 100 Days	All but \$176 a day	–	Up to \$176	Up to \$176	Up to \$176
Medicare Part B Physician Services and Supplies					
Deductible	–	–	\$198	–	–
Coinsurance	Generally 80%	Generally 20%	Generally 20%	Generally 20%	Up to \$20 co-payment for office visit Up to \$50 co-payment for ER
Excess Benefits	–	–	100% up to Medicare's Limit	100% up to Medicare's Limit	–
Benefit for Blood First Three Pints	\$0	Three pints	Three Pints	Three Pints	Three Pints
Additional Amounts	100%	–	–	–	–
Additional Benefits					
Emergency Care Received Outside the U.S.	–	–	Up to \$50,000	Up to \$50,000	Up to \$50,000

*All plans may not be available in your state. Please refer to the Outline of Coverage your agent provided.

**Plan F is only available for those first eligible for Medicare prior to January 1, 2020.



ManhattanLife[™]

Standing By You. Since 1850.

Underwritten by:

ManhattanLife Assurance Company of America

Administrative Office: 10777 Northwest Freeway, Houston, TX 77092

Toll Free Telephone: 800-877-7703

ManhattanLife Assurance Medicare Supplement Plans

For Claims, Please Call:

1-800-877-7703

This brochure is an illustration, not a contract. Consult your Outline of Coverage for a complete description of benefits available to you.

Receipt

Received from _____

this _____ day of _____ the sum of \$ _____

being the payment of _____ Premium.

This insurance applied for shall not take effect until the effective date of the policy and the payment of the first premium. In the event the application is declined, any payments made by the applicant will be returned.

Agent's Signature

**Make checks payable to The ManhattanLife Assurance Company of America.
Do not make payable to agent or leave payee blank.**